



Ensis fisheries | M1 15-16 Industrial Zone - Hulumalé | Michilimagu | 335 6677

Email: hello@aira.mv | Website: aira.mv



COMMITMENT

Your home is a definition of your personality and wellbeing. That's why, when you live in AIRA you can enjoy all the luxuries and amenities without leaving your home. From our experience with our first project SAIMA Residence and other developments surrounding the beautiful green city of Hulhumale', we have created AIRA keeping in mind to provide a truly "exceptional living" at the best market value for your investment and living.

AIRA is designed contemplating the change in Maldivian housing needs from basic to better managed, convenient and comfortable living. What makes AIRA a place of "exceptional living" is its alluring modern design, the seafront location, lavish amenity spaces and unique ambience.



THE DESIGN

The concept of AIRA is developed by professionals from Singapore with great experience and knowledge in shaping up space by creating themes and functions with greater thoughts for true needs. The design of AIRA is not about what has been already done, it's about evolvement. The interiors of AIRA redefine what contemporary and exquisitely designed living spaces should be.

The highlights of the Design of AIRA are:-

- Convenient closed kitchens
- Separate laundry areas
- Accessibility to air-conditioning outdoor units for servicing without any hassle
- Fixing toilet blockages without disrupting the neighbors
- Fire retardant main doors
- Insulated party walls
- Privacy at the entrance including the foot rack area
- Best fit for fixed and loose furniture within the apartment
- Sufficient universal points on both sides of the bed

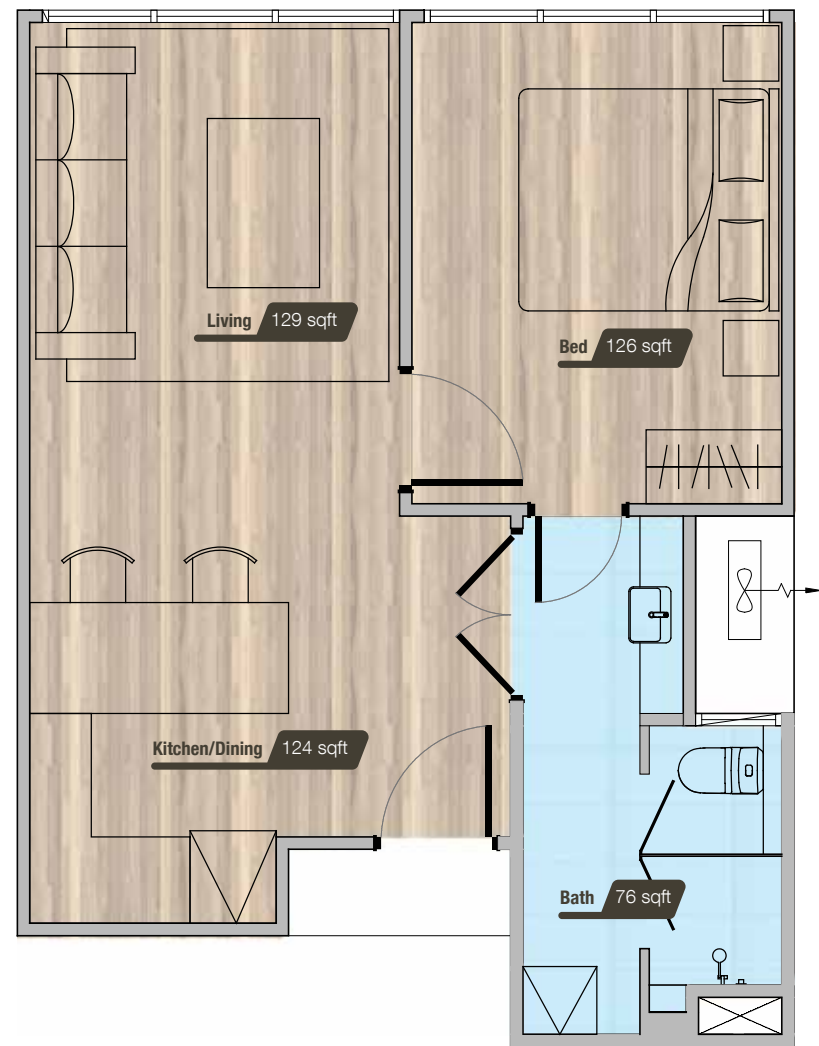
AIRA is designed by incorporating leading architectural and constructional innovations and it's all about giving a personalized commitment to you.



SINGLE ROOM UNIT - A1

TOTAL AREA : 527 sqft

A cozy and vogueish room unit with spacious living and ample space for bath facilities and laundry, providing access to visitors from the living room too. The bath facilities are with sufficient storage space and is large enough to adopt grab bar and other safety standards. This room unit is perfect for bachelors, elderly, couples and for a small family with a kid too.



WING - A WING - B 1 BEDROOM | 1 TOILET



UNIT TYPE - A1 3rd TO 7th FLOOR

WING - A CITY VIEW WING - B



SEA VIEW



TWO PLUS ONE - B1

Total area : 1,043 sqft

The two bed room apartment is ideally designed for small families, having two bed rooms with an additional smaller room which can be used as a maid room, home office or any other purpose as convenient for you. This design also incorporates a closed kitchenette and a separate laundry

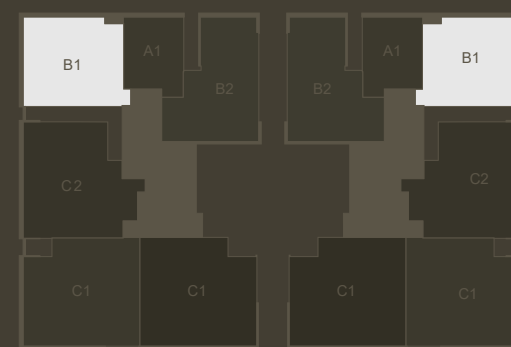


WING - A WING - B 2 BEDROOM | 3 TOILET

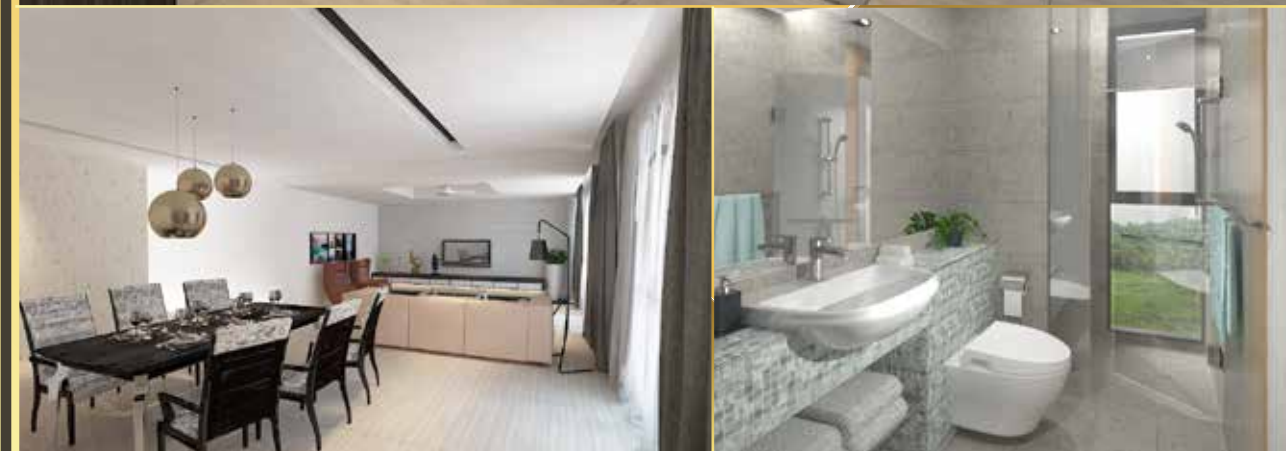


UNIT TYPE - B1 3rd TO 7th FLOOR

WING - A CITY VIEW WING - B



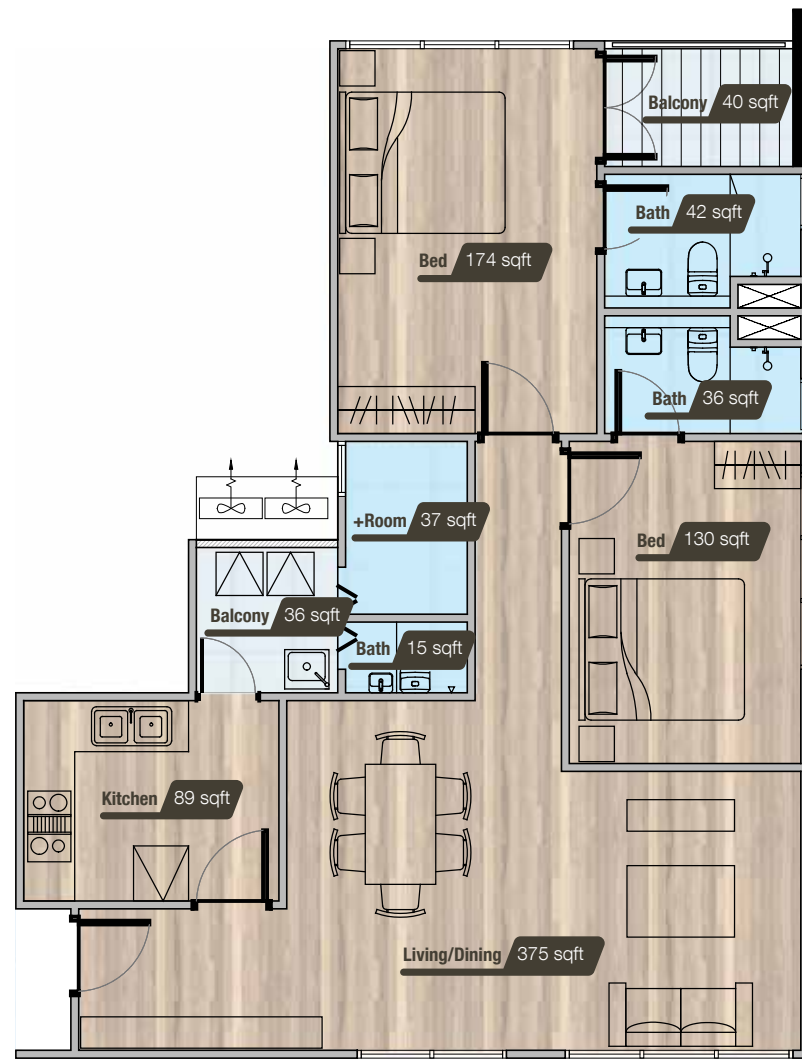
SEA VIEW



TWO PLUS ONE - B2

Total area : 1,101 sqft

The two bed room apartment is ideally designed for small families, having two bed rooms with an additional smaller room which can be used as a maid room, home office or any other purpose as convenient for you. This design also incorporates a closed kitchenette and a separate laundry

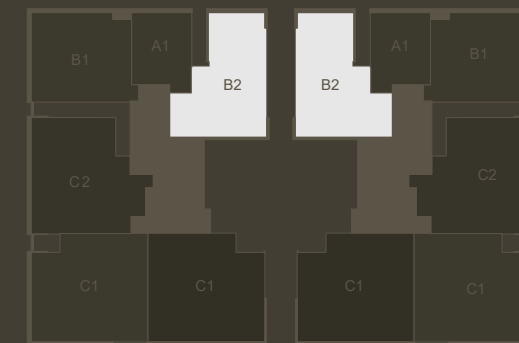


WING - A WING - B 2 BEDROOM | 3 TOILETS



UNIT TYPE - B2 3rd TO 7th FLOOR

WING - A CITY VIEW WING - B



SEA VIEW



THREE PLUS ONE - C1

Total area : 1,409 sqft

The three bedroom apartment is spacious with enough privacy for bedroom entrance.

The closed kitchen design with a serving hatch, has ample space for storage and a large double door refrigerator. The apartment is designed in a way to provide privacy in the study area along with living and entertainment space.

This unit also has an additional smaller room with accessibility to toilet from outside, through a conveniently large yard holding the washing area.

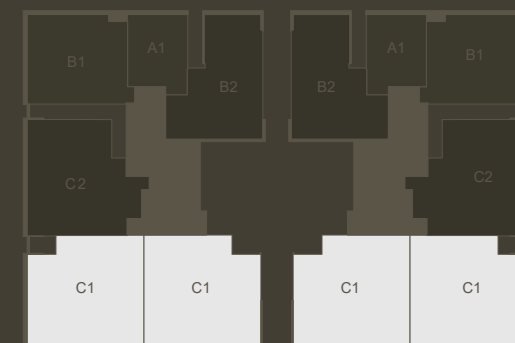


WING - A WING - B 3 BEDROOM | 4 TOILETS



UNIT TYPE - C1 3rd TO 7th FLOOR

WING - A CITY VIEW WING - B



SEA VIEW



THREE PLUS ONE - C2

Total area : 1,413 sqft

The three bedroom apartment is spacious with enough privacy for bedroom entrance.

The closed kitchen design with a serving hatch, has ample space for storage and a large double door refrigerator. The apartment is designed in a way to provide privacy in the study area along with living and entertainment space.

This unit also has an additional smaller room with accessibility to toilet from outside, through a conveniently large yard holding the washing area.

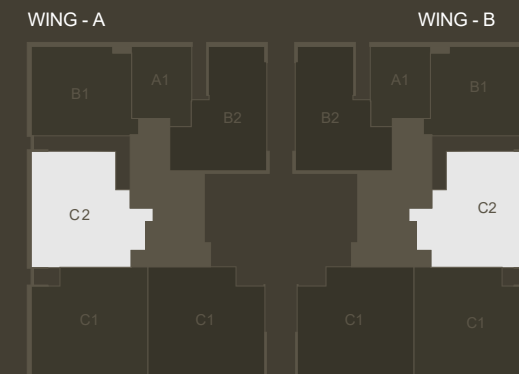


WING - A WING - B 3 BEDROOM | 4 TOILET



UNIT TYPE - C1 3rd TO 7th FLOOR

CITY VIEW



SEA VIEW



CONSTRUCTION TECHNOLOGY

Most of us own apartments as home or as investments. Therefore, we are determined to build confidence that our structure, services and fixed elements of the buildings are of good quality and workmanship for future demands. All specialized aspects of the building are designed and constructed by professionals from the region.

Here at AIRA we are engaging specialists and consultants for great quality assurance and for the stability of your investment. As we believe to provide a hassle free living experience which cater both to your wellbeing and aesthetics.

FEATURES & FACILITIES

Living in AIRA means a new level of service with personal attention having amenities which create an "exceptional living".

With one of the largest swimming pools in Maldives and common entertainment facilities the building is designed for a wholesome life experience.

Live the exceptional life in AIRA with a world of possibilities where everyday is a new experience



CHILL OUT & ENTERTAINMENT & FITNESS

Jacuzzi Pool

Multi-purpose hall / Functional Hall

20 Meter Lap Pool

Gym

Wading Pool (Kids Pool)

SHOPPING /FOOD /DINING

In-house convenient store

Pool side refreshment and snacks

Salon and speciality shops

Pool side sandwich outlet



5 min walking distance

AIRA
Sales office & showroom

Hulhumalé Ferry Terminal

C4-1

C4-2

C4-3

C4-4

